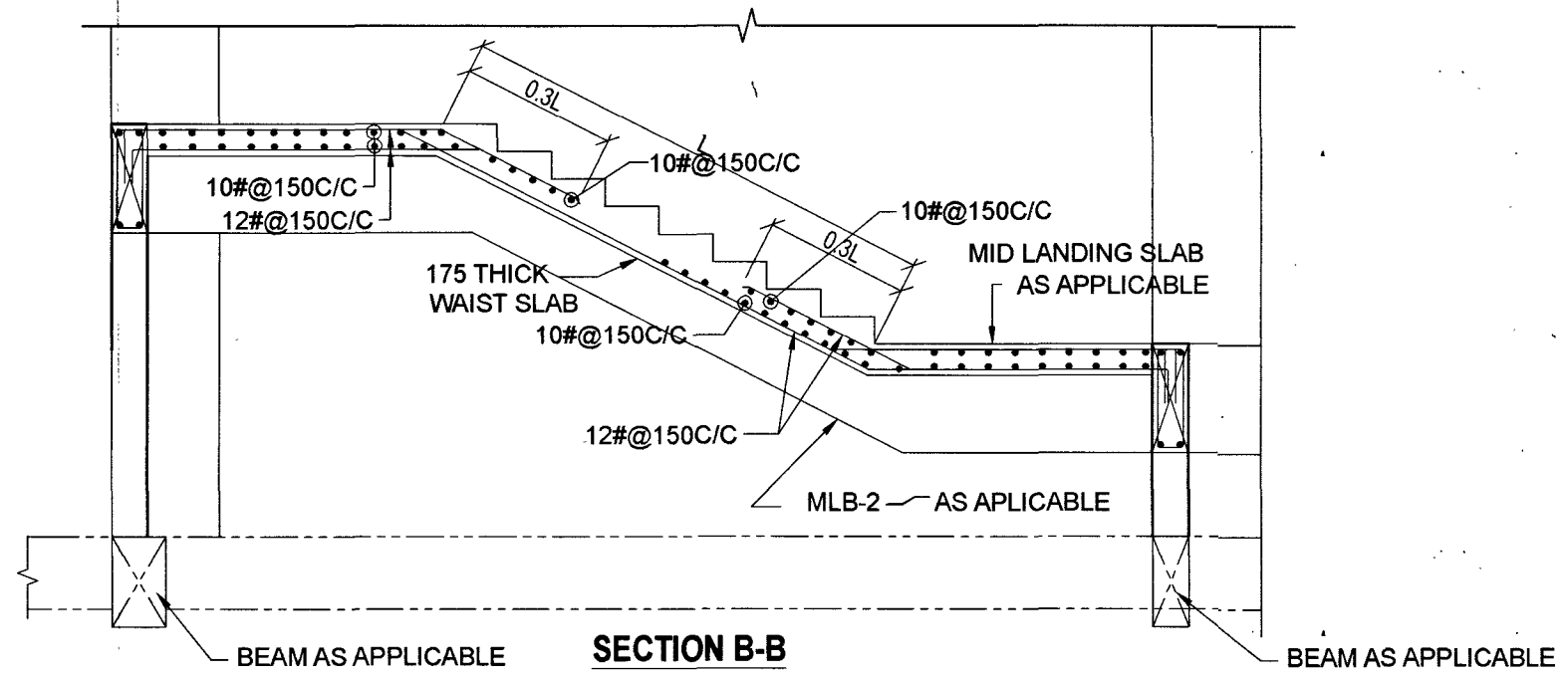
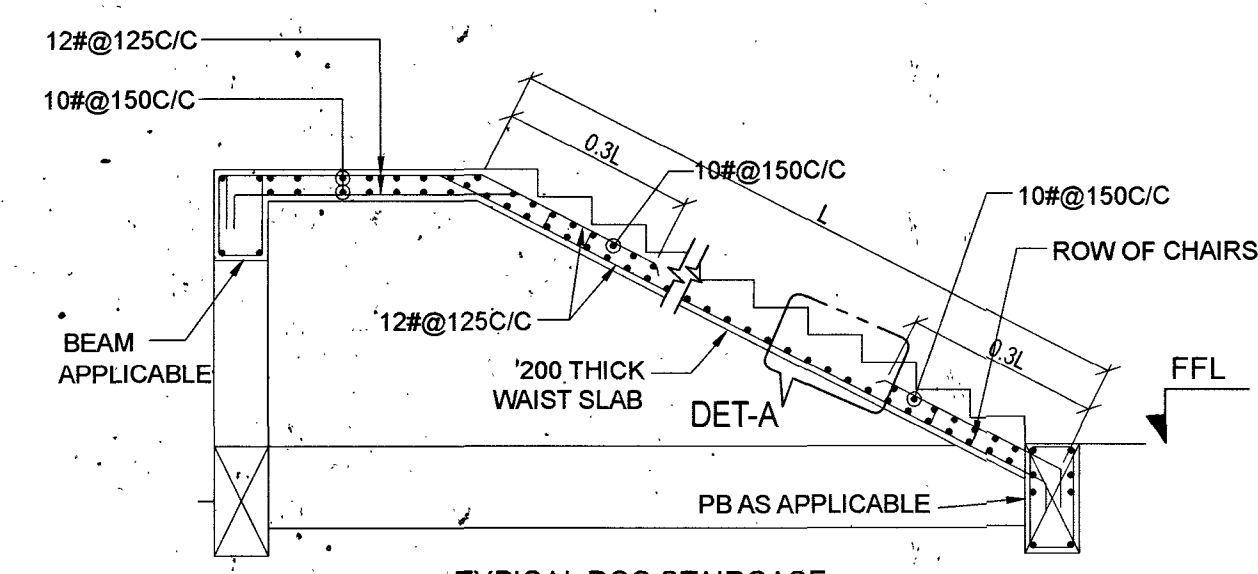


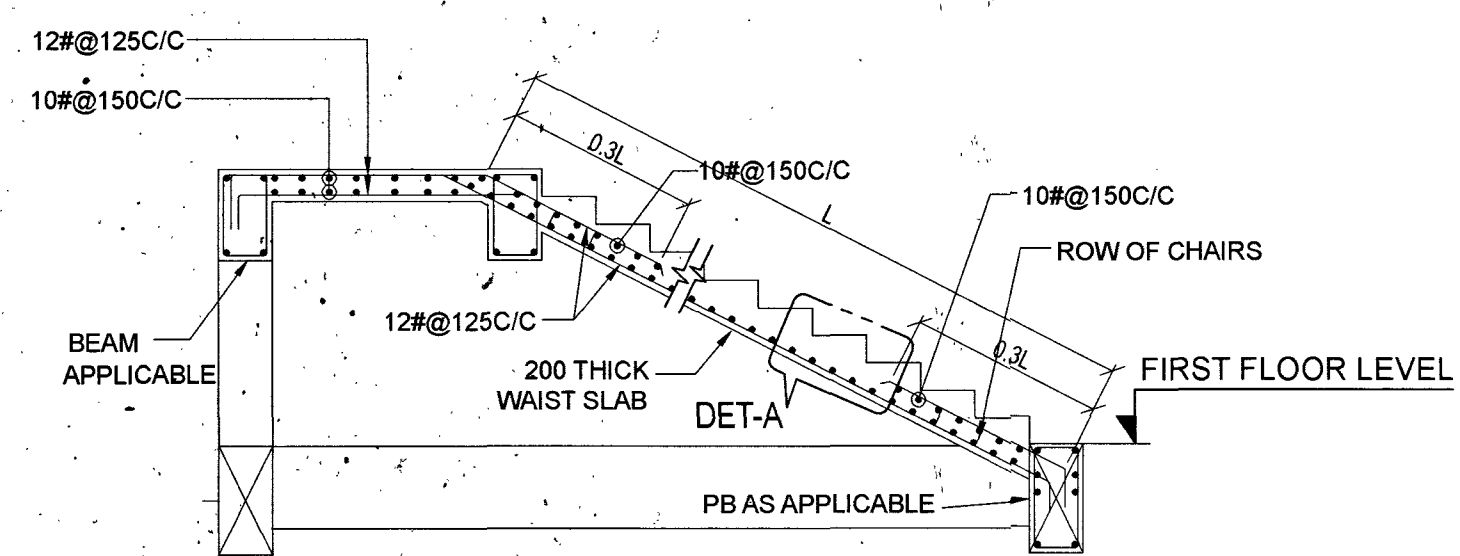
SECTION-E
TYPICAL RCC DETAIL OF MAIN STAIRCASE



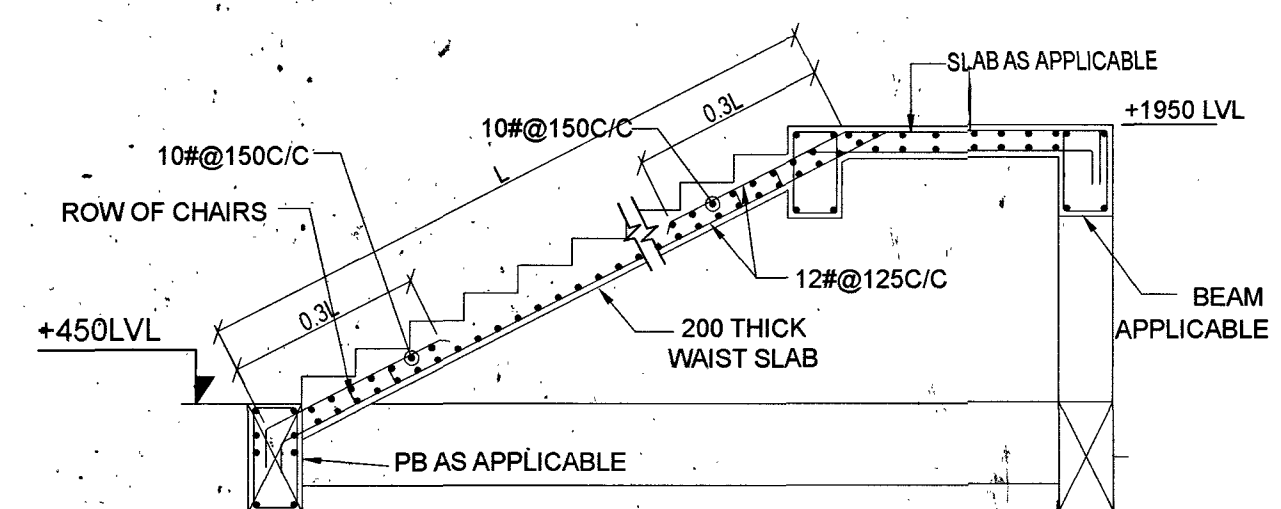
SECTION-B-B



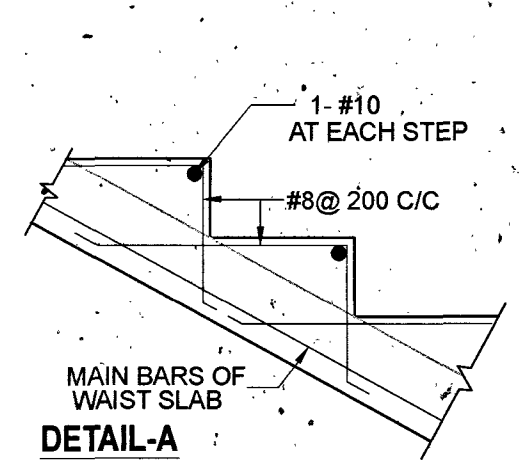
TYPICAL RCC STAIRCASE
SECTION-F



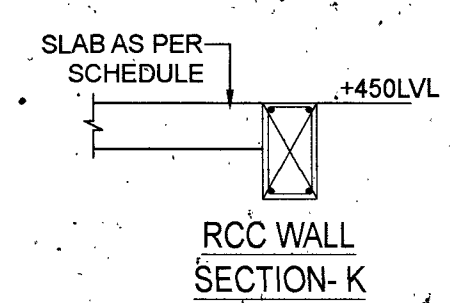
TYPICAL RCC STAIRCASE
SECTION-G



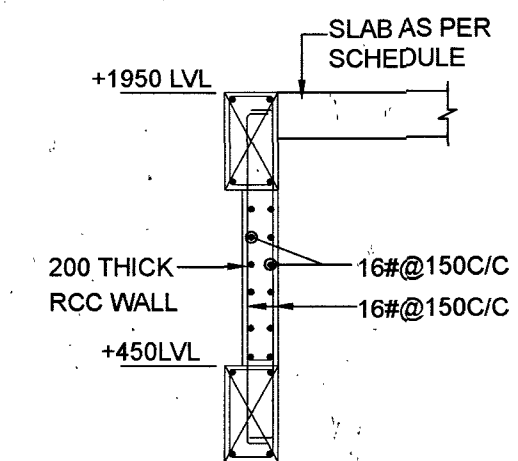
TYPICAL RCC STAIRCASE
SECTION-M



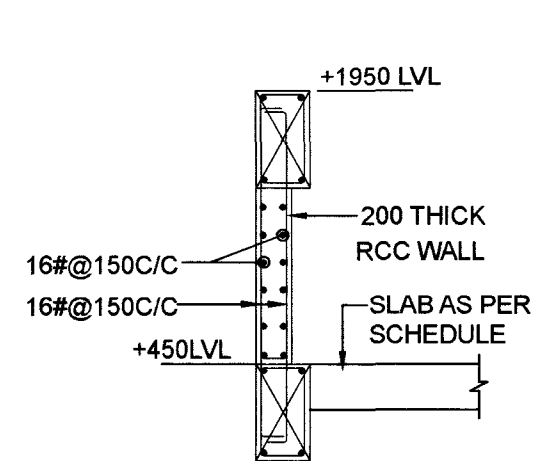
DETAIL-A
DETAIL OF RCC STEP
SCALE 1:15



RCC WALL
SECTION-K



RCC WALL
SECTION-H



RCC WALL
SECTION-J

NOTES
1. ALL DIMENSIONS AND LEVELS GIVEN ARE IN MILLIMETERS UNLESS OTHERWISE SPECIFIED.
2. FIGURED DIMENSIONS ONLY SHALL BE FOLLOWED.

DATE	DESCRIPTION	SIGN
REVISIONS		

VETTED BY
ALL DETAILS HAVE BEEN THOROUGHLY CHECKED AND ARE IN COMPLIANCE TO STANDARDS, CODES, REGULATIONS IN RESPECT OF SAFETY, SOUNDNESS AND ECONOMY.

PROVN OF HANGAR AND ANNEXE BUILDING AT INS DEGA VISAKHAPATNAM

STAIRCASE RCC DETAILS

SHT NO.	S34	HELIOS ENGINEERING CONSULTANTS #38-34-66 FCI COLONY MARRIPALEM VISAKHAPATNAM - 530018
PRO NO.	ST2204	
SCALE.	AS NOTED	
DRN BY.	KSS	
DATE.	28-02-2023	

DESIGNED BY DV TRINADH RAO	CHECKED BY S SURYA MS (STRUCTURES)
-----------------------------------	-------------------------------------------

CHIEF ENGINEER (NAVY)
VISAKHAPATNAM

REF.DRG.NO : CEVZ/2022/WD-2120(S) Sht.No.34/40

DESIGNS & DRAWINGS PREPARED UNDER CONSULTANCY FROM M/S HELIOS ENGINEERING CONSULTANTS AND VETTED BY ANDHRA UNIVERSITY

Keshi Raman
Lt Col
SO 1 (Design)
for Chief Engineer

Srinivas Nalla, IDSE
Lt Col (NF)
Director (Design)
for Chief Engineer